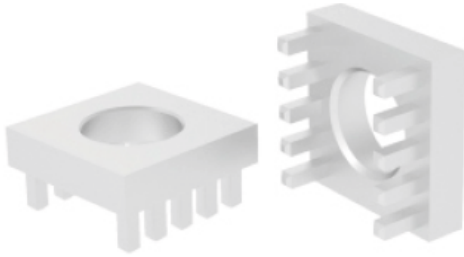


PCB Connectors PRESS-FIT

Serie TP-GET

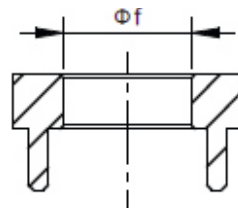
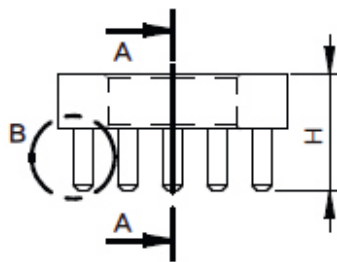


TP-GET

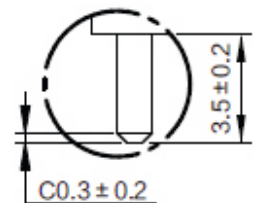
Features

- Two-Part, Base-Part, Two-Row-Pin population, PCB connection for fixing cable lugs
- Fixing of large heavy components (e.g. bat-tery disconnection switch)
- Protecting PCB from mechanical stress

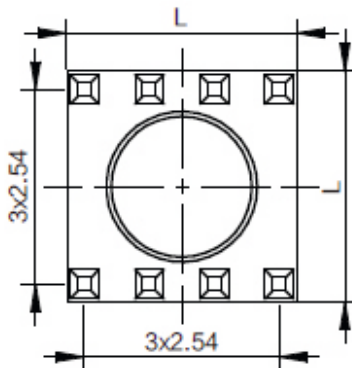
Drawings



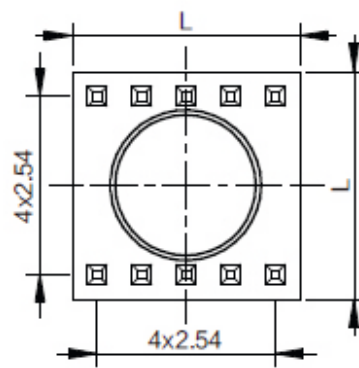
SECTION A-A



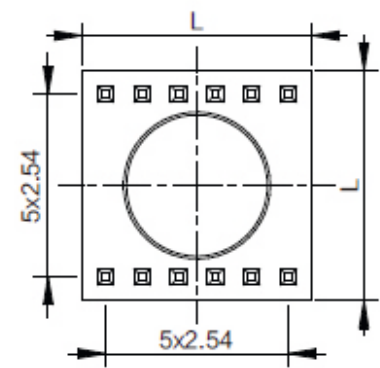
DETAIL B



8 PINS



10 PINS



12 PINS

Technical Data

PROPERTIES

Material	CuZn39Pb3
Surface	Tin
Drill Hole Diameter	1.6mm
Final Hole Diameter	1.475mm
Heat Resistance	-55 C up to +150 C
Retaining Force	as per IEC 352-5

Drawing No.	øf	H	L	Pins	IR(A)	Tigneting Torque
PFPE1101	ø5,5	6,6	9	8	160	2,2Nm
PFPE1102	ø7,3	7,3	13	10	240	3,9Nm
PFPE1103	ø9,8	9,8	16	12	320	17Nm
PFPE1104	ø10,5	10,5	16	12	320	17Nm