

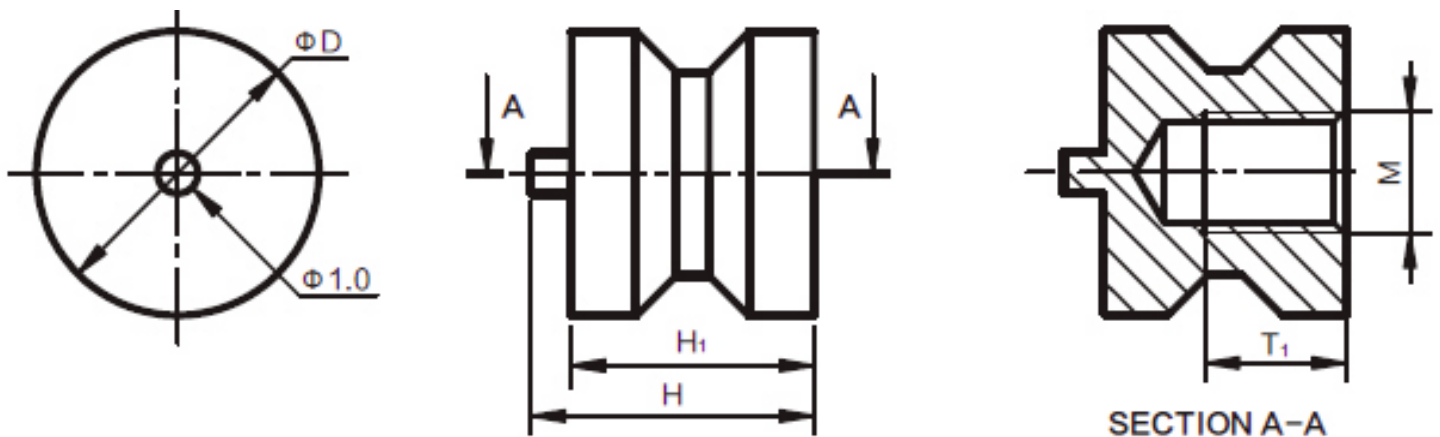


SMD-FTP

Features

- For soldering in SMT, Blistered for fully automated assembly.
- PCB connection for fixing cable lugs
- UNC thread or customer specific modifications on demand

Drawings



Technical Data

| PROPERTIES | |
|------------------------|---------------------|
| Material | Brass |
| Surface | Tin |
| Solder Cream Thickness | 150 μm |
| Heat Resistance | -55 C up to +150 C |
| Packaging | Bulk; Tape and Reel |

| Drawing No. | M | H | H1 | T1 | ϕD |
|-------------|-----|------|----|----|-----------|
| PFPE2701 | M3 | 6,8 | 6 | 4 | $\phi 7$ |
| PFPE2702 | M4 | 7,8 | 7 | 4 | $\phi 9$ |
| PFPE2703 | M5 | 7,8 | 7 | 4 | $\phi 9$ |
| PFPE2704 | M6 | 11,3 | 11 | 7 | $\phi 10$ |
| PFPE2705 | M8 | 14,3 | 14 | 8 | $\phi 13$ |
| PFPE2706 | M10 | 18,3 | 18 | 11 | $\phi 16$ |