

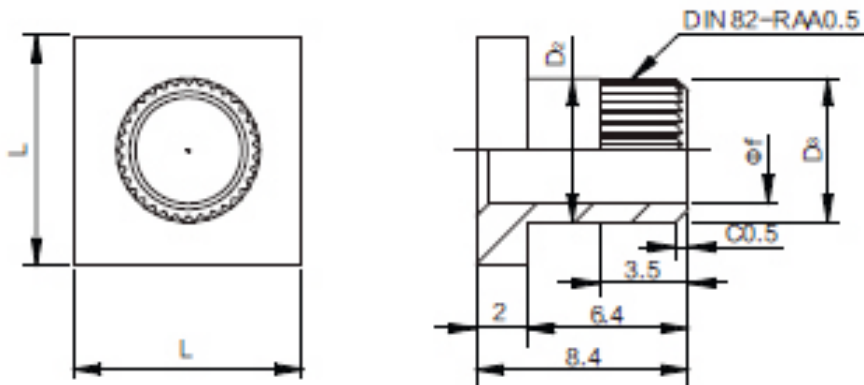


TP-SESH

Features

- Two-Part, Female Through-Hole. The cable can be fixed on the PCB board with the Base-Part.
- Fixing of large heavy components

Drawings



Technical Data

PROPERTIES

Material	CuZn39Pb3
Surface	Tin
Rate Current	up to 300A
Heat Resistance	-55 C up to +150 C

Drawninf No.	øf	L	D2-0,2	D3±0,05	Used Base Plate
PFPE1601	ø3,2	9	5,65	5,65	PFPE1101
PFPE1602	ø3,2	10	6,35	6,35	PFPE1201
PFPE1603	ø4,2	9	5,65	5,65	PFPE1101
PFPE1604	ø4,2	10	6,35	6,35	PFPE1201
PFPE1605	ø4,2	13	7,45	7,45	PFPE1202 PFPE1102
PFPE1606	ø5,2	10	6,35	6,35	PFPE1201
PFPE1607	ø5,2	13	7,45	7,45	PFPE1202 PFPE1102
PFPE1608	ø6,2	13	7,45	7,45	PFPE1202 PFPE1102
PFPE1609	ø6,2	16	10,65	10,65	PFPE1104
PFPE1610	ø8,2	16	10	10	PFPE1103
PFPE1611	ø8,2	16	10,65	10,65	PFPE1104
PFPE1612	ø8,2	16	12,15	12,15	PFPE1203
PFPE1613	10,2	16	12,15	12,15	PFPE1203