

PCB Connectors PRESS-FIT

Serie SMD-RAP

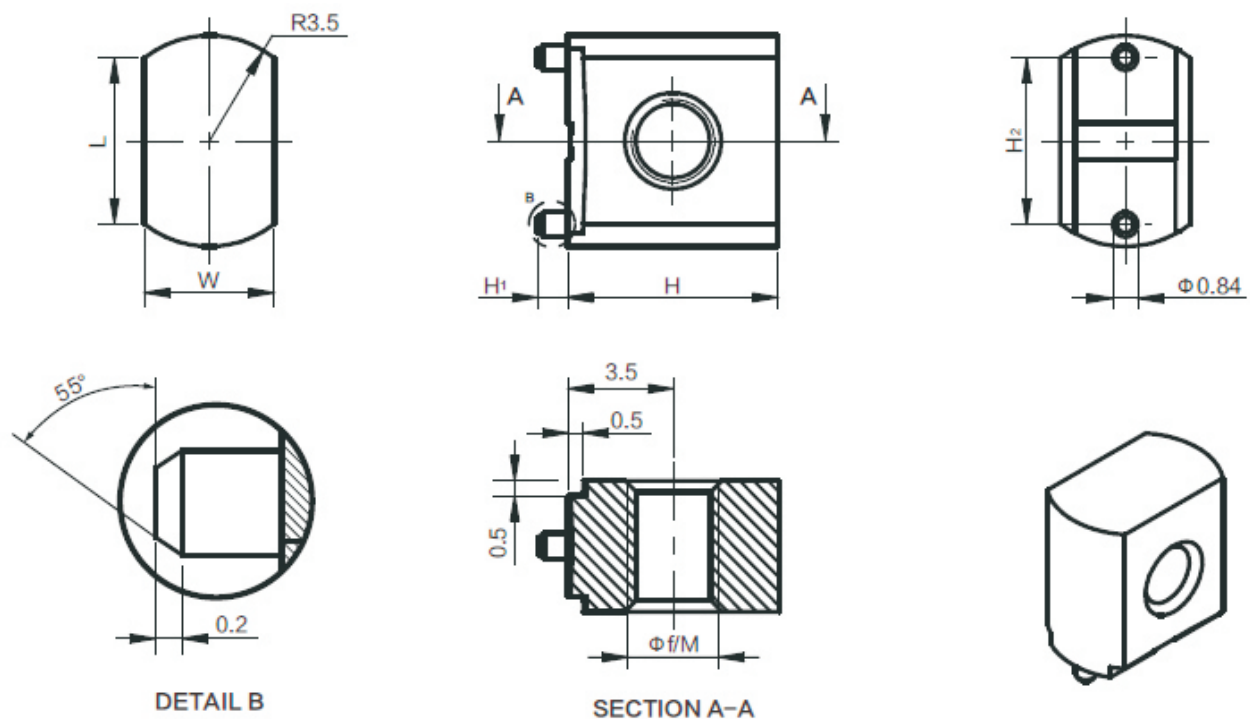


**SMD-RAP**

Features

- For soldering in SMT, Blistered for fully automated assembly.
- PCB connection for fixing cable lugs
- High mechanical forces and torques, Small footprint

Drawings



Technical Data

PROPERTIES	
Material	Brass
Surface	Tin
Solder Cream Thickness	120 μm
Heat Resistance	-55 C up to +150 C
Packaging	Bulk; Tape and Reel

Drawing No.	øf/M	L	w	H	H1	H2	IR(A)	Tightening Torque
PFPE3101	ø3,3	5,5	4,33	7	1	5,54	50	?
PFPE3102	M3	5,5	4,33	7	1	5,54	50	0,4Nm