

PCB Connectors PRESS-FIT

Serie SMD-ETP

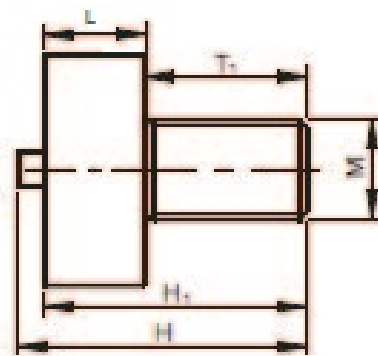
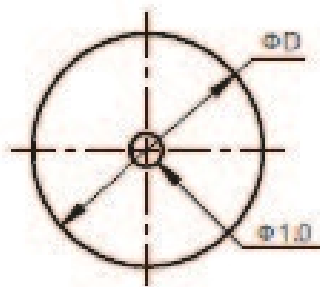


SMD-ETP

Features

- For soldering in SMT, Blistered for fully automated assembly.
- PCB connection for fixing cable lugs
- UNC thread or customer specific modifications on demand

Drawings



Technical Data

PROPERTIES	
Material	Brass
Surface	Tin
Solder Cream Thickness	150 μ m
Heat Resistance	-55 C up to +150 C
Packaging	Bulk; Tape and Reel

Drawing No.	M	H	H1	T1	ϕD
PFPE2301	M3	8,8	8	5	$\phi 7$
PFPE2302	M4	8,8	8	5	$\phi 7$
PFPE2303	M4	10,3	9,5	6	$\phi 9$
PFPE2304	M5	13,3	12,5	8	$\phi 9$
PFPE2305	M6	16,3	15,5	10	$\phi 13$
PFPE2306	M8	21,3	20,5	13	$\phi 13$
PFPE2307	M10	24,8	24	16	$\phi 16$